

Donning Personal Protective Equipment (PPE)

Wash hands (preferred) or use an alcohol-based hand sanitizer before donning equipment. PPE equipment should be put on OUTSIDE of the room, prior to entering.



Gown

1

Fully cover torso from neck to knees,. Cover arms to end of wrist and wrap around back

2

Fasten in back of neck and waist



Mask or Respirator

1

Secure ties or elastic bands at middle of head and neck.

2

Fit flexible band to nose bridge

3

Fit snug to face and below the chin

4

Fit-check respirator



Goggles or Face Shield

1

Place over face and eyes and adjust fit



Gloves

1

Extend to cover wrist of isolation gown

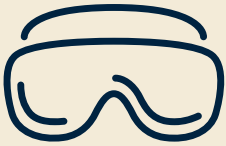
Removing Personal Protective Equipment (PPE)

Remove gloves, goggles or face shield, and gown before leaving resident room. Remove the respirator after leaving the resident room and closing the door.



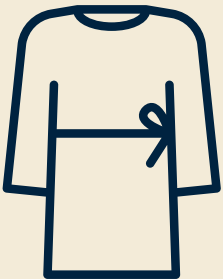
Gloves (Outside is contaminated)

- 1** Using a gloved hand, grasp the palm area of the other gloved hand and peel off first glove
- 2** Hold removed glove in gloved hand
- 3** Slide fingers of ungloved hand under remaining glove at wrist and peel off second glove over first glove
- 4** Discard gloves in waste container



Goggles or Face Shield (Outside is contaminated)

- 1** Remove goggles or face shield from the back by lifting head band or ear piece.
- 2** If the item is reusable, place in designated receptacle for reprocessing, otherwise discard in a waste container.



GOWN (Outside is contaminated)

- 1** Unfasten gown ties, sleeves should not contact your body when reaching for ties
- 2** Pull gown away from neck and shoulders, touching inside of gown only
- 3** Turn gown inside out
- 4** Fold or roll into a bundle and discard in waste container



Mask or Respirator (Outside is contaminated)

- 1** Grasp bottom ties or elastics of the mask/respirator, then the ones at the top, and remove without touching the front
- 2** Discard in waste container

Wash hands (preferred) or use an alcohol-based hand sanitizer after removing equipment